



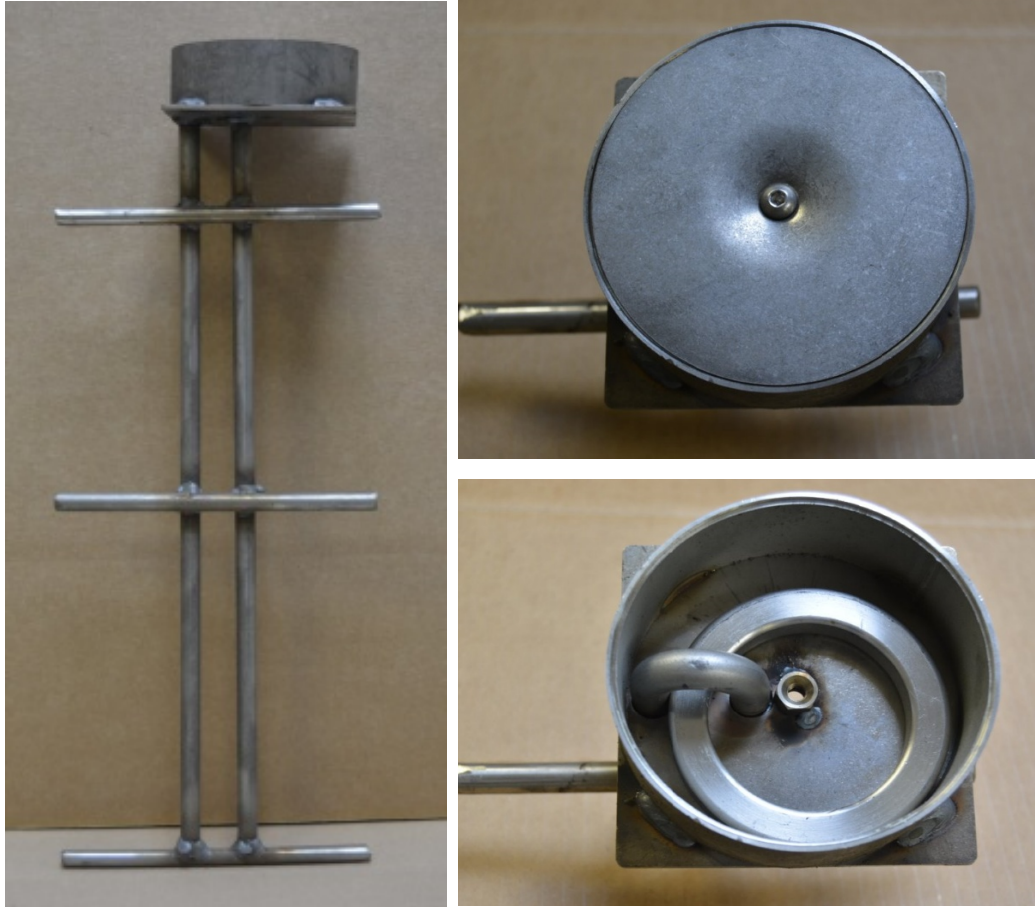
**We will custom build anchors  
to your specifications!**

Eagan, MN 55121

Anchor Manufacturing, Inc  
Email: [info@anchormfg.com](mailto:info@anchormfg.com) Phone: 651-270-3226

# ANC SERIES

One bolt circular directional cup anchor with or without a cover  
Cover may be powder coated  
100% 304 Stainless Steel  
Ideal for commercial tents



	Work Load	Breaking Strength	Length	Cup OD	Weight	Rod Diameter
ANC204	2,000#	9,500#	4"	3"	2#	1/4"
ANC212	2,000#	9,500#	12"	3"	2#	1/4"
ANC222	2,000#	9,500#	22"	3"	3#	1/4"
ANC312	3,000#	13,500#	12"	3"	3#	1/4"
ANC322	3,000#	19,000#	22"	3"	4#	3/8"
ANC522	5,000#	40,500#	22"	4.5"	5#	1/2"
ANC7500	7,500#	45,000#	30"	5"	10#	5/8"
ANC10000	10,000#	55,000#	31"	5.3"	13#	3/4"

**When not in use, all anchors are recessed below surface area with no obstructions so you can plow snow, walk, mow, or drive over the anchor. Anchor may be ordered with or without cover.**

**Eagan, MN 55121**

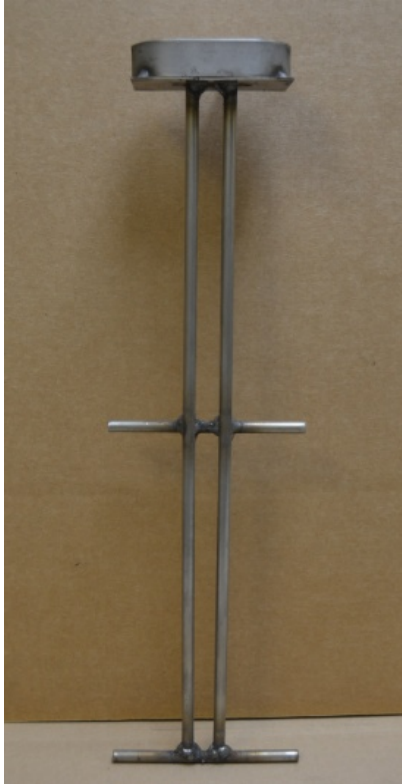
**Anchor Manufacturing, Inc**

**Email:** [info@anchormfg.com](mailto:info@anchormfg.com) **Phone:** 651-270-3226

# AN SERIES

## Ideal for Aircraft anchoring

Single Engine to Large Aircraft  
Bi-directional oval cup anchor cover  
may be powder coated



	Work Load	Breaking Strength	Length	Cup OD	Weight	Rod Diameter
AN1004	1000#	9,500#	4"	2.30 x 4.20	1#	1/4"
AN1022	1000#	9,500#	22"	2.30 x 4.20	1.5#	1/4"
AN2004	2,000#	13,000#	4"	2.42 x 4.41	1#	1/4"
AN2022	2,000#	13,500#	22"	2.42 x 4.41	1.5#	1/4"
AN3500	3,500#	19,000#	22"	2.42 x 4.41	3#	3/8"
AN5000	5,000#	40,500#	24"	4.00 x 6.88	6#	1/2"
AN7500	7,500#	45,000#	30"	4.00 x 6.88	13#	5/8"
AN10000	10,000#	55,000#	31"	4.75 x 7.88	13#	3/4"
AN20000	20,000#	97,000#	35"	6.00 x 10.25	32#	1"
AN30000	30,000#	145,000#	44"	6.00 x 11.50		45#
	1.25"					

**When not in use, all anchors are recessed below surface area with no obstructions so you can plow snow, walk, mow, or drive over the anchor. Anchor may be ordered with or without cover.**

# AN PLATE SERIES

## Bi-directional plated shallow anchor series

100% 304 Stainless Steel, this plate anchor is utilized when the hole depth is less then required . For pull strength re-rod is placed above the 8" x 12" x 3/8" plate (or any size plate) in both directions to increase pull out strength. The holes in the plate may be utilized to anchor into a footing below the plate. Cover may be powder coated.



	Work Load	Breaking Strength	Length	Cup OD	Weight	Rod Diameter
AN3500	3,500#	19,000#	22"	2.42 x 4.41	3#	3/8"
AN5000	5,000#	40,500#	24"	4.00 x 6.88	6#	1/2"
AN7500	7,500#	45,000#	30"	4.00 x 6.88	13#	5/8"
AN10000	10,000#	55,000#	31"	4.75 x 7.88	13#	3/4"

**When not in use, all anchors are recessed below surface area with no obstructions so you can plow snow, walk, mow, or drive over the anchor. Anchor may be ordered with or without cover.**



# HK SERIES

Industrial anchors that never have any part of the  
anchor above grade

100% 304 Stainless Steel

Cover may be powder coated



	Work Load	Breaking Strength	Length	Cup OD	Weight	Rod Diameter
HK5000	5,000#	45,500#	24"	2.5" x 5.0"	10#	1/2"
HK10000	10,000#	55,000#	30"	4.0" x 7.0"	14#	3/4"
HK20000	20,000#	100,000#	40"	5.0" x 10.0"	32#	1.0"
HK25000	25,000#	125,000#	54"	6.75" x 10.0"	40#	1.125"
HK30000	30,000#	150,000#	54"	6.75" x 10.0"	75#	1 1/4"
HK40000	40,000#	200,000#	57"	7.0" x 10.0"	115#	1 1/2"
HK50000	50,000#	225,000#	65"	7.75 x 10.0"	175#	1 3/4"

**When not in use, all anchors are recessed below surface area with no obstructions so you can plow snow, walk, mow, or drive over the anchor. Anchor may be ordered with or without cover**

**Eagan, MN 55121**

**Anchor Manufacturing, Inc**

**Email:** [info@anchormfg.com](mailto:info@anchormfg.com) **Phone:** 651-270-3226

# BL SERIES

Made from 100% 304 Stainless Steel.

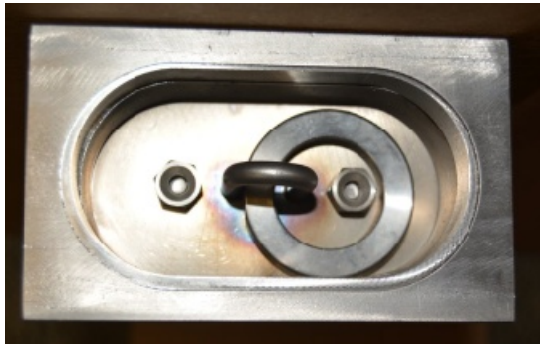
Used for paver patio applications.

Built for less cutting of paver block.

Main anchor legs have a re-enforcement strip welded to them to transfer load off pavers to the footings.

Covers may be powder coated.

Bi-directional anchoring



	Work Load	Breaking Strength	Cup OD	Length	Weight	Rod Diameter
BL3500	3,500#	19,500#	2.42" x 4.41"	22"	12#	3/8"
BL5000	5,000#	40,500#	4.0" x 6.88"	26"	18#	1/2"

**When not in use, all anchors are recessed below surface area with no obstructions so you can plow snow, walk, mow, or drive over the anchor. Anchor may be ordered with or without cover.**

**Anchor Manufacturing, Inc**  
**Eagan, MN 55121**

**Email: [info@anchormfg.com](mailto:info@anchormfg.com)**

**Phone: 651-270-3226**

# BLC SERIES

## Directional Paver anchors

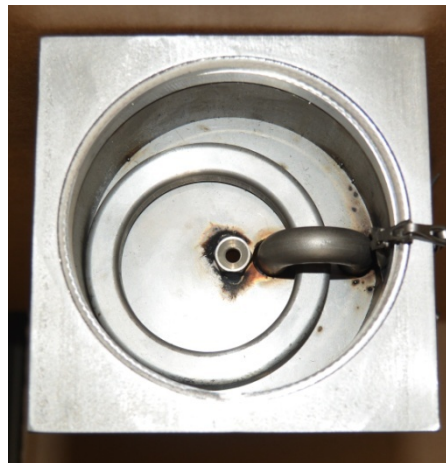
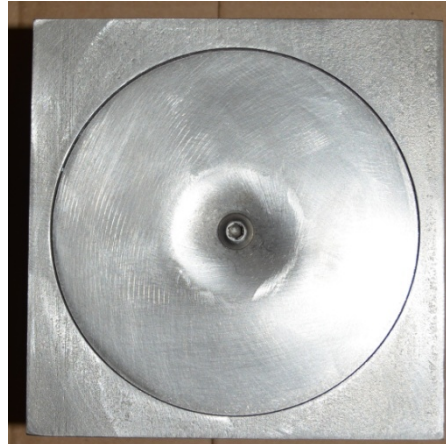
Made from 100% 304 Stainless Steel.

Used for paver patio applications.

Built for less cutting of paver block.

Main anchor legs have a re-enforcement strip welded to them to transfer load off pavers to the footings.

Covers may be powder coated.



	Work Load	Breaking Strength	Cup OD	Length	Weight	Rod Diameter
BLC2022	2,000#	9,500#	3"	22"	3#	1/4"
BLC3500	3,500#	19,500#	3"	22"	12#	3/8"
BLC5000	5,000#	40,500#	4.5"	26"	18#	1/2"
BLC7500	7,500#	75,000#	5"	30"	20#	5/8"

**When not in use, all anchors are recessed below surface area with no obstructions so you can plow snow, walk, mow, or drive over the anchor. Anchor may be ordered with or without cover.**



# MOORING EYES

UFC3 260-01 &

FAA Advisory #20-35C

Navy, Marine Corp and Air Force Tie Downs



3/4" Diameter



1" Diameter



1 1/4" Diameter



**Sta-Lok Safety Systems Model SLA-1** open eye tie down

anchor is designed for paved concrete parking aprons and is typical of the design detailed in FAA Advisory Circular #20-35C.

**Concrete Blackout Cup**

Slot cut to your spec

**Typical sizing:**

Eye Radius: 1-3 inches

Secondary Radius: 1-2 inches

Height: 4-8 inches

Length: 24-36 inches

Will bend to any spec

**Domestic Material:**

A-36

4130

ASTM A576

AISI C8620

304 Stainless steel

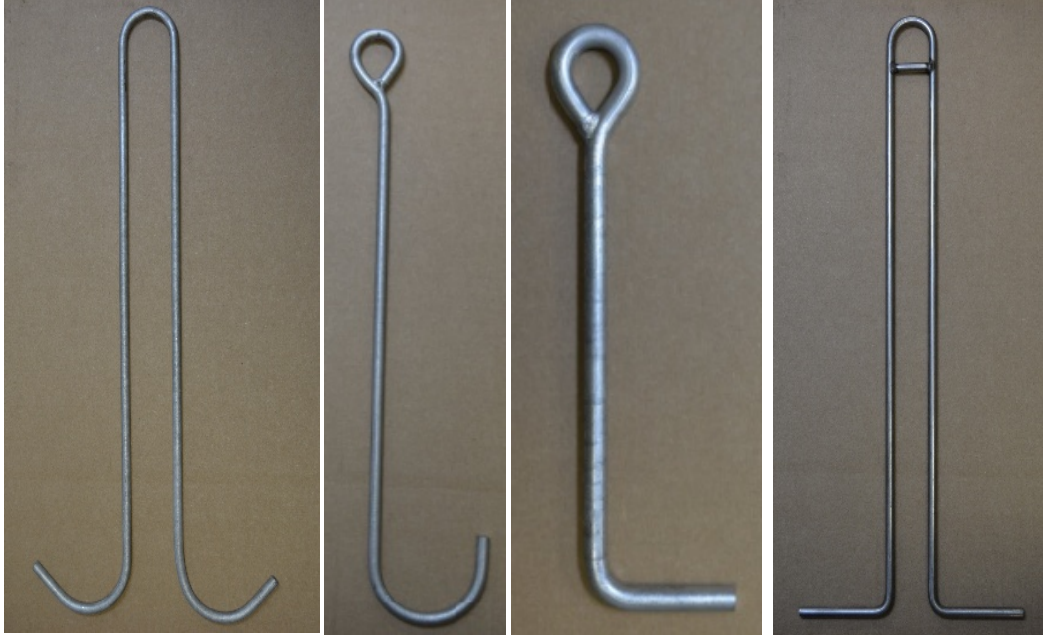
Or any material as specified

Galvanizes to ASTM 123 if required in spec



# SLA TIE-DOWN SERIES

## Welded Eyes



SLA-3-SH    SLA-2-SH    SLA-2-FF    SLA-3-FF

### **Material:**

Fabricated from 100% American manufacturing A-36 continuous round steel rod, or any material specced

Available in 1/4", 3/8", 1/2", 5/8", 3/4", 7/8", 1.0" and 1.25" bar diameters.

Hot dipped galvanized to ASTM standard A123.

Will manufacture to any length or diameter.

### **Dimensions:**

Eye Inside Dimension is 1 1/2".

Anchors may be built to the specifications above or to your custom specifications – including custom length, material, diameter, Eye ID size and finish.

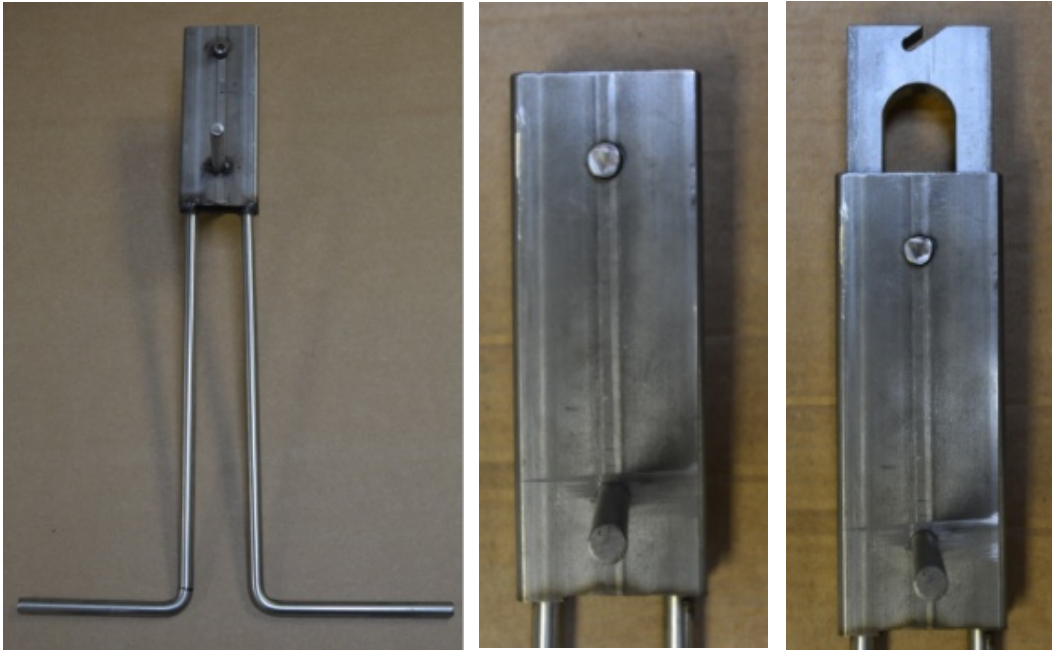
### **Note:**

Due to metal "spring-back" during fabrication, slight variations in the finished dimensions are possible.

# SL SLIDING HOOK SERIES

100% 304 Stainless Steel

Hook slides up and down in sleeve providing a small footprint



	Work Load	Breaking Strength	Length	Weight
SL5000	5,000#	23,000#	22"	5#
SL10000	10,000#	55,000#	30"	15#
SL20000	20,000#	95,000#	32"	20#

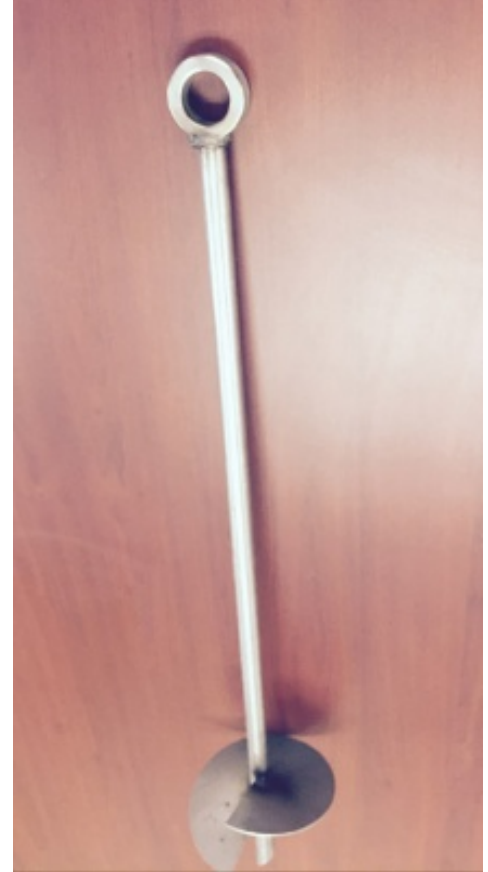
Eagan, MN 55121

**Anchor Manufacturing, Inc**  
Email: [info@anchormfg.com](mailto:info@anchormfg.com)

Phone: 651-270-3226

# HL SERIES

100% 304 Stainless Steel  
Weld-less Ring



## Dimensions

Bar diameters available in 1/4", 3/8", 1/2", 5/8", 3/4", 7/8", 1.0" and 1.25". Diameters for helicals range from 4" to 10". Anchors may be built to the specifications above or to your custom specifications – including custom length, material, diameter and finish.

# PL SERIES

100% 304 Stainless Steel  
Small footprint



Body sleeve can be manufactured to any length.

PL 0010

Work Load	Rod Diameter	Sleeve OD	Hole Diameter	Length	Weight
1,000#	3/4"	1"	1/4"	4"	4#
2,000#	1"	1.5"	1/2"	18"	7#

Eagan, MN 55121

**Anchor Manufacturing, Inc**  
Email: [info@anchormfg.com](mailto:info@anchormfg.com)

Phone: 651-270-322



# SLA TRIANGLE STABILIZER

## FOR TEMPORARY ANCHORING

Triangle plate significantly increases diagonal  
pullout strength when placed in soil



Triangle plate floats with rod  
Triangle plate is 7' wide and 10' in length

# HELICAL ANCHORS

## WELDED EYES

Stainless steel or galvanized  
Helical anchor driver for installation



Driver

**Material:**

Fabricated from 100% American manufacturing A-36 continuous round steel rod, or any material spec'ed

Available in 1/4", 3/8", 1/2", 5/8", 3/4", 7/8", 1.0" and 1.25" bar diameters.

Hot dipped galvanized to ASTM standard A123.

Will manufacture to any length.

**Dimensions:**

Eye Inside Dimension is 1 1/2".

Anchors may be built to the specifications above or to your custom specifications – including custom length, material, diameter, Eye ID size and finish.

**Note:**

Due to metal "spring-back" during fabrication, slight variations in the finished dimensions are possible.

# Aircraft Anti Thrust Block



Manufactured to your  
specifications

# Clevis Grab Hook with Chain



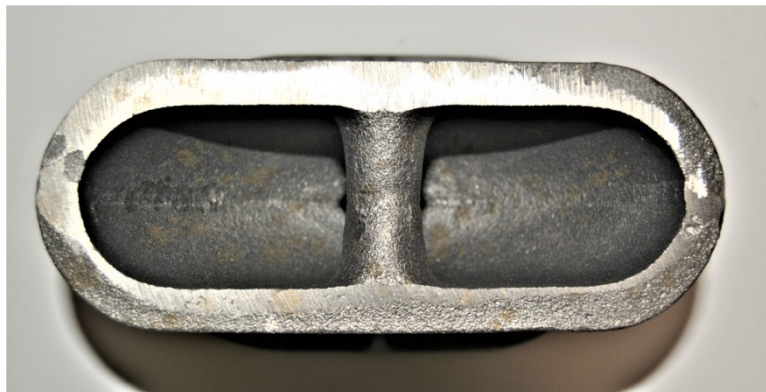
# S Hook with Chain





# Neenal Anchors

Ductile Iron  
Anchors have holes for reinforcing rods



Work Load	Breaking Strength		Height
R-3490	9,000#	Force	3"
R-3490-A	9,000#	Force	6"
R-3490-B	200,000#	Force	9"

# Aircraft Tie-Down Chain

with a slack and primary “S” hook.

Bolt or clamp to anchor.

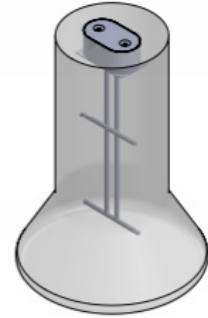
Any length, any size



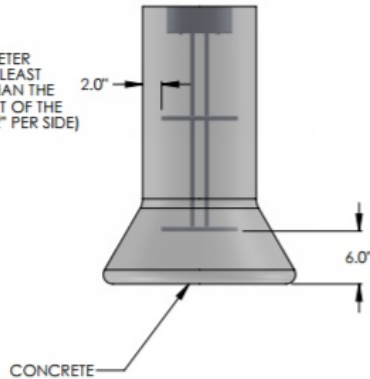
## DIAGONAL PULL

### ANCHOR INSTALLATION GUIDELINE

USING A CIVIL ENGINEER TO DETERMINE SOIL PULLOUT STRENGTH IS RECOMMENDED



HOLE DIAMETER **MUST** BE AT LEAST 4" WIDER THAN THE WIDEST PART OF THE ANCHOR (2" PER SIDE)



HOLE DEPTH **MUST** BE AT LEAST 6" DEEPER THAN THE LENGTH OF THE ANCHOR

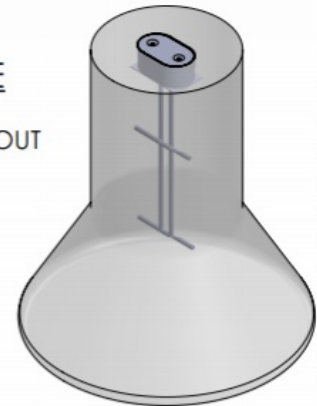
**Anchor must be below frost line**

**ANCHOR MFG**  
Eagan, Minnesota

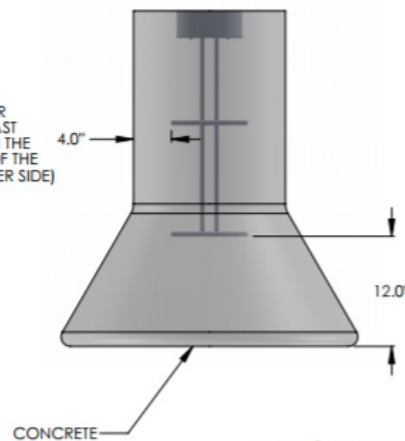
## VERTICAL PULL

### ANCHOR INSTALLATION GUIDELINE

USING A CIVIL ENGINEER TO DETERMINE SOIL PULLOUT STRENGTH IS RECOMMENDED



HOLE DIAMETER **MUST** BE AT LEAST 8" WIDER THAN THE WIDEST PART OF THE ANCHOR (4" PER SIDE)



HOLE DEPTH **MUST** BE AT LEAST 12" DEEPER THAN THE LENGTH OF THE ANCHOR

**Anchor must be below frost line**

**ANCHOR MFG**  
Eagan, Minnesota

**Anchor Manufacturing, Inc**

**Eagan, MN 55121**

**Email: [info@anchormfg.com](mailto:info@anchormfg.com)**

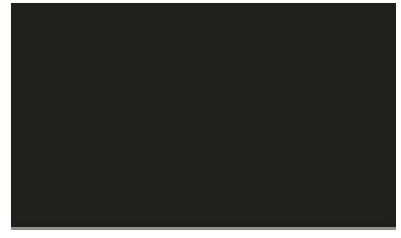
**Phone: 651-270-3226**

# Powder Coating Colors

More colors available at this website: <https://powdercoatinginc.com/color-chart/>



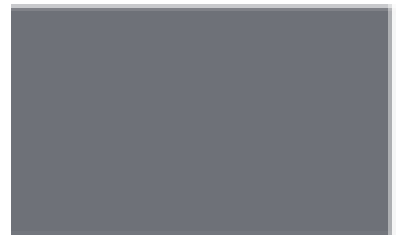
Red



Black



Orange



Dark Grey



Safety Yellow



Light Grey



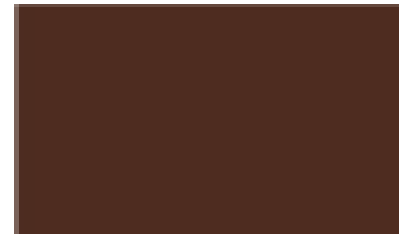
Light Green



White



Forest Green



Dark Brown



Blue



Purple



## LIMITED WARRANTY

Seller's products are carefully inspected for manufacturing defects, however, it is not always possible to detect hidden defects. Said product are warranted only to the extent that Seller will replace without charge, products proved to have manufacturing defects within 6 months of the date of delivery thereof and provided Seller has been given an opportunity to inspect the product alleged to be defective and the installation of use thereof. NO WARRANTY IS INCLUDED AGAINST ANY EXPENSE FOR REMOVAL, REINSTALLATION OR OTHER CONSEQUENTIAL DAMAGES ARISING FROM ANY DEFECT. THIS WARRANTY IS THE SOLD WARRANTY OF MANUFACTURER AND ANY OTHER WARRANTIES EXPRESS, IMPLIED IN LAW OR IMPLIED IN FACT, INCLUDING ANY WARRANTIES OF MERCHANTABILITY AND FITNESS FOR USE, ARE H,EREBY SPECIFICALLY EXCLUDED.